

Contents

1.WI-FI module functions

2.WI-FI module use manual

3.WI-FI module installation manual

1. WI-FI module functions;

Long range control	<ul style="list-style-type: none"> Control AC On/Off, Mode, Temp adjust, Fan speed, and other expend functions(EX: Health) No Fan mode, The Air flow function is auto air flow.
Sleep curve	<ul style="list-style-type: none"> According to different groups, recommend four best sleep curve. (Man, Woman, Old, Child) Users also can set himself sleep curve.
Error alarm	<ul style="list-style-type: none"> If the AC appear fault, the <u>wifi</u> module will send the error information to user's phone.
Timer	<ul style="list-style-type: none"> User can timer the On/Off time.
Cloud set	<ul style="list-style-type: none"> Can fix the AC position, and recommend the best setting according to the local whether.
packet control	<ul style="list-style-type: none"> Can control more than one AC unit.

2.WI-FI module use manual

2.1. Network structure

Local control process: ①-- ②-- ④ -- ②-- ①

Long-range control process: ①-- ③ -- ②-- ④ -- ②-- ③-- ①

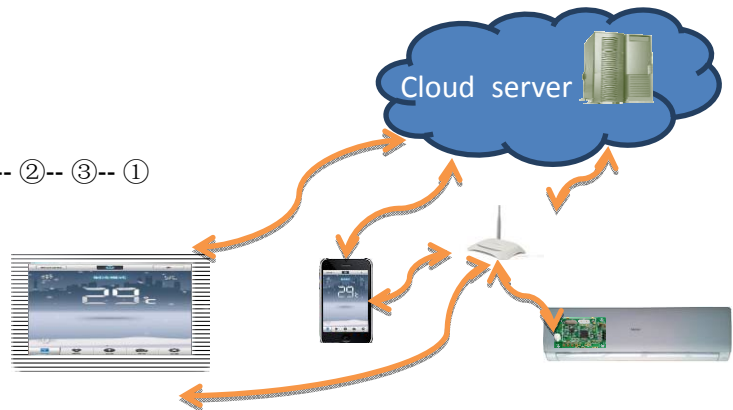
①: iOS\Smart phone Or Pad

②: Wireless router.

One router can match more than one AC unit.

③: Haier cloud server

④: AC wifi module



2.2. User operation

- ◆ User should prepare : Smart Phone and wireless router
- ◆ Smart Phone : Support IOS or Android system.
Android version should support 854x480 800x480 320x480 resolution.
wireless route: Do not use public wifi.
- ◆ Download the "Haier smart AC software", by scan the two-dimension code
- ◆ 1) Install the software and register.
2) Add the AC in software.

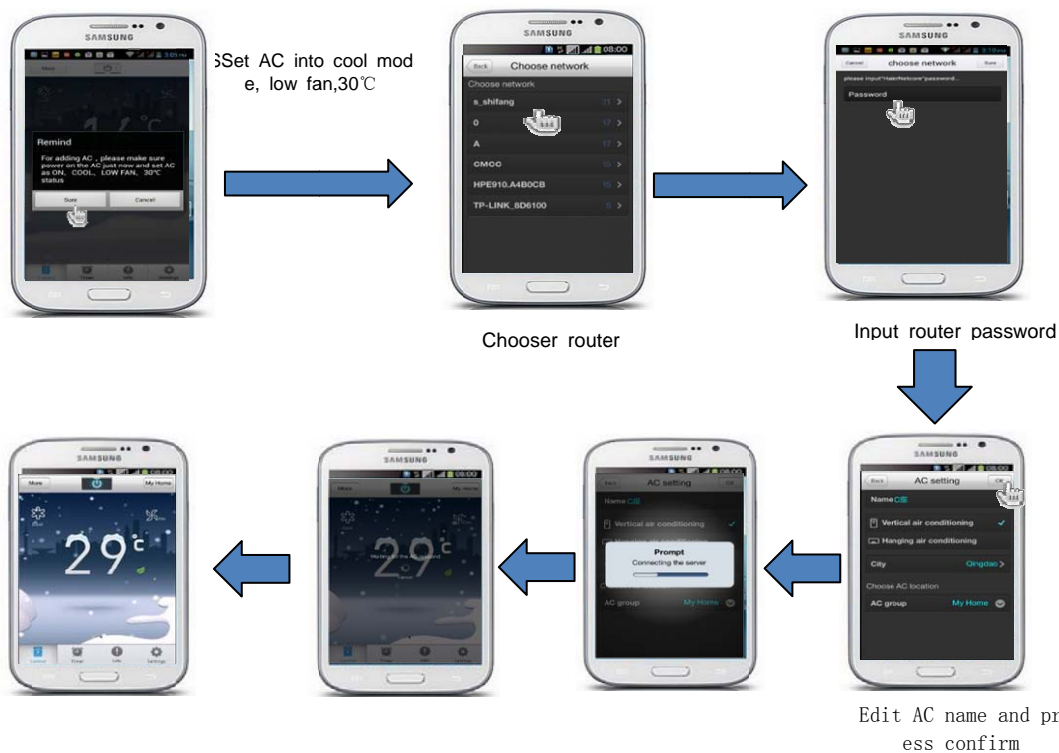


1) Register and Log in

Install Haier APP

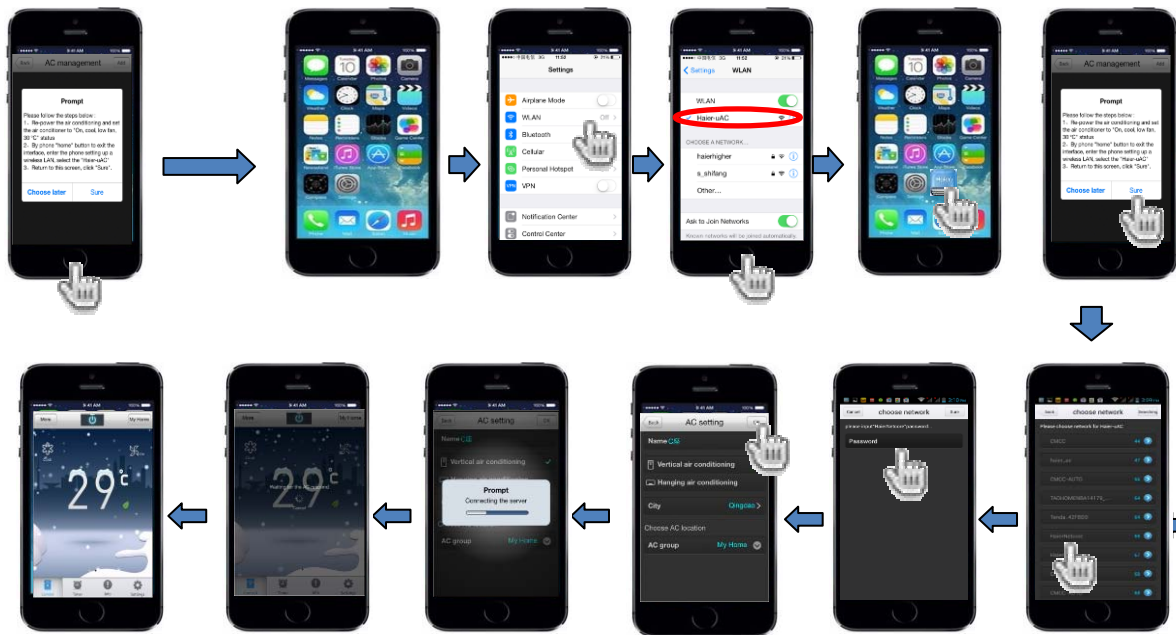


2) Bound Haier AC



3) IOS system bound AC

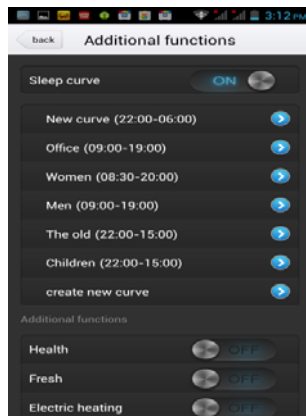
Set AC into cool mode, low fan, 30°C



4) Functions introduce



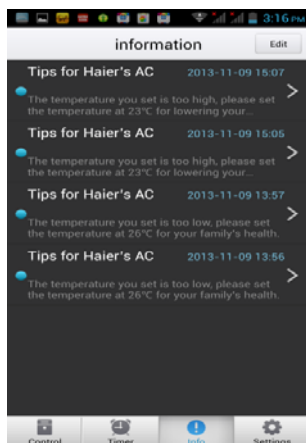
AC control



Sleep curve



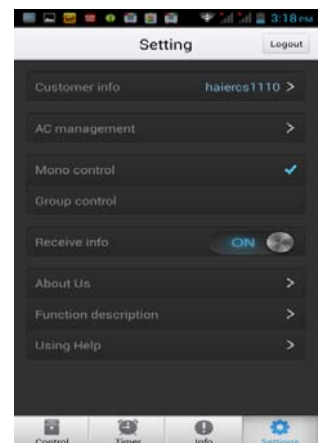
Expend function (reserved)



Error alarm information



On/Off timer



Choose one or more AC to control

5)Common questions and answer:

5.1 Can I use WIFI function, if there is no wireless router at home?

Answer: No, it's not. Smart air conditioner need support of wireless router and internet to makes WIFI function working normally. You should install wireless router and connect into internet.

5.2 Can I use WI-FI function, if the wireless router not connect internet?

Answer: Smart air conditioner need support of wireless router and internet to makes WIFI function working normally. If wireless router and air conditioner have configured, after wireless router off, use mobile phone connect wireless router which the air conditioner configured, use mobile phone can also control air conditioner.

5.3 What's the type of wireless router we can need?

Answer: Wireless router that sales normally in the market, that's all ok. Recommend to use the wireless router with WIFI certification.

5.4 What matters need attention about the distance between wireless router and air conditioner?

Answer:(1)The distance between wireless router and air conditioner less than 10m.
(2)At most have a wall between wireless router and air conditioner.

5.5 What to do when mobile phone couldn't find air conditioner?

- (1)Check if the appliance is powered on.
- (2)Check if the unit set the mode of "open/cooling/low fan mode/30°C"?
- (3)Check if powered on is longer than 10 minutes? Restart and reset the mode to "open/cooling/low fan mode/30°C"
- (4)Turn into WIFI network settings of mobile phone, search Haier_uAC wireless router from wireless router list, if there is still have no Haier_uAC, may be WIFI module is damage, please call for service.

5.6 Cannot get WIFI at home.

Answer:
(1)Pleass confirm there is a wireless router at home and it is powered on.
(2)If the wireless router has been powered on, it is probably that the router is broken or the router's signal is too weak. Please move the appliances near to the router or re-start the router. If WIFI cannot be get yet, please replace the wireless router.

5.7The app's interface presents gray after login, and the air condition cannot be controlled either.

Answer:
(1)Check if the appliance is powered on.
(2)Check if the home network is normal. If the network cannot be used, please connect the phone with the home wireless router to control the appliance.
(3)Check the signal intensity around the appliance (by downloading a testing tool from Android Market). If the signal is too weak, please strength it or replace a new one.
(4)Restart the appliance to check if it can be controlled normally.
(5)Bind the appliance again and confirm the SSID and password is correct.
(6)It is forbidden to enter the appliance controlled interface when it is off-line.
(7)Relogin the haier intelligent air condition APP.
(8)Enter the mobile application management program to clear the APP's data and force it to stop. Then login again.
(9)If the problem is still there, it is probably that the WIFI module is broken, please call the service center to fix it.

5.8 What does mean a group of Air conditioner?

Answer: This means if you add several units into one group, you can control them at the same time.

5.9 Have configured on one mobile phone, what can I do if want to change another mobile phone?

Answer: Your registered user name can login on free mobile phone. So long as air conditioner have configured succeed, change mobile phone no need configure, only need download APP and login is ok.

5.10 How many mobile phones can login at the same time use one ID

Answer:No limit.